

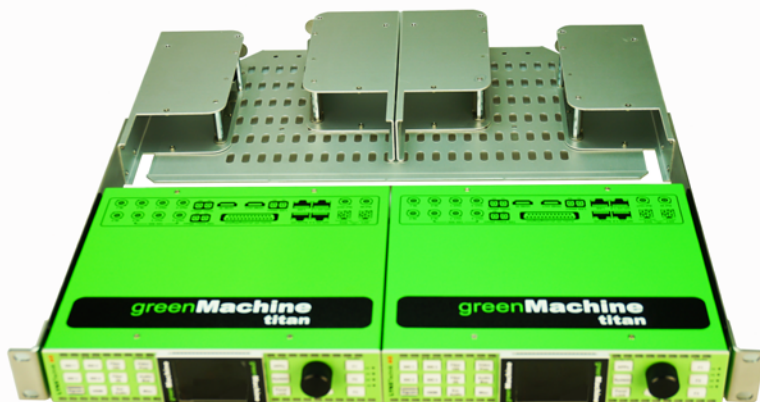
RXT 6001

Rack Frame Extension for RFR 6000

For optimum placement within an equipment room, greenMachine hardware can be mounted in a 19" rack enclosure, the RFR6000 1RU rack frame option.



TWO greenMachines WITH TWO POWER SUPPLIES EACH

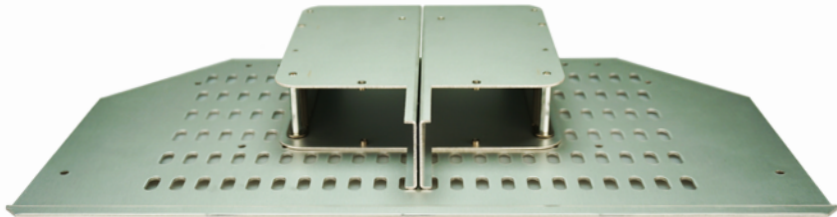


UNPACKING THE RXT 6001 RACK FRAME EXTENSION

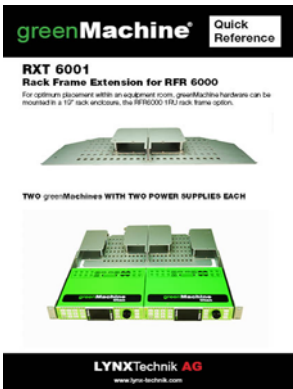
We have included everything that is required for assembling the RXT 6001 to the RFR 6000 rack frame.

WHAT'S IN THE BOX?

- ☒ 1x rack frame extension (RXT 6001)
- ☒ 1x Quick Reference Guide
- ☒ 1x Warranty Card
- ☒ 2.5mm and 3mm countersunk screws



1x rack frame extension (RXT 6001)



1x Quick Reference



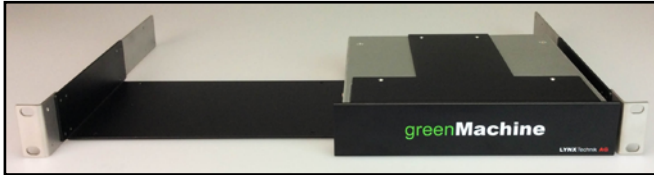
1x Warranty Card

1 TWO greenMachines on RFR 6000 Rack Frame

Note

If the RFR 6000 Rack frame is already equipped with two greenMachines, then proceed to **Step 9**

Step 1: Assemble the 2x 19" mounting brackets (see page 6). **MB**

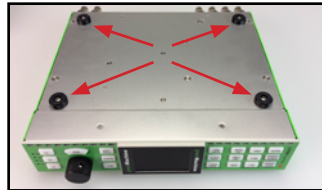
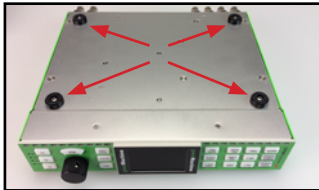


Step 2: Turn the rack frame upside down and remove the power supply container by unscrewing the 4x countersunk screws.

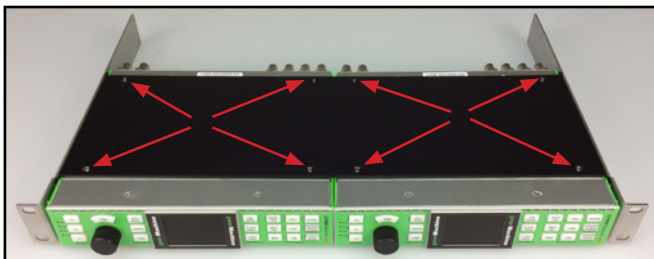
Set the power supply container and screws to the side. These screws will be used to attach the greenMachine to the mounting tray.



Step 3: Turn both the greenMachine modules upside down and place them next to each other. Remove the 4x feet from the bottom of each of greenMachine. Set the eight screws together with the feet aside for possible later use.

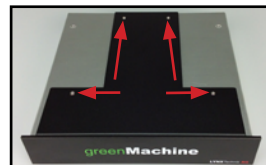


Step 4: Place the rack frame mounting tray over both greenMachines and align the holes in the mounting tray with the holes where the feet were. Use the 4x 3mm countersunk screws to attach the mounting tray to the hardware.



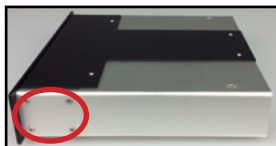
Step 5: Take the power supply container and remove the four screws on the top.

Note: These 4x countersunk screws are smaller than the other screws and should not be used for any other assembly in the rack frame. Set these four screws aside for possible later use.



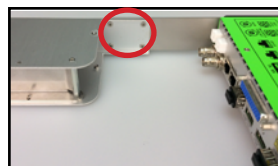
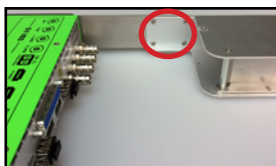
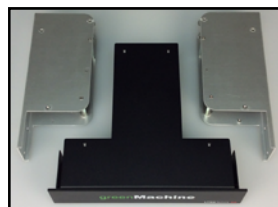
Step 6: Remove the 4x screws on both sides of the power supply container.

Note: Set the power supply container to the side. Set the four screws aside for possible later use.



Step 7: Remove the power supply mounts.

Step 8: You are now ready to place the power supply mounts to the 19" mounting brackets. Place the two power supply mounts on the inside at the end of each of the 19" mounting brackets.



Attach the power supply mounts to the rack frame mounting brackets with the screws (countersink 3mm).

Step 9: Insert the power supplies (see page 7). **PS**



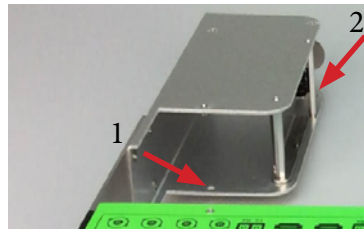
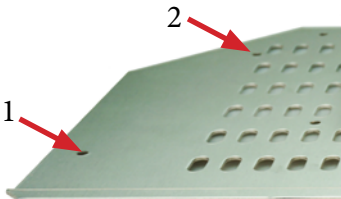


HOW TO INSTALL RXT 6001 RACK FRAME EXTENSION ON RFR 6000

Prerequisite RFR 6000 Rack must be assembled as shown in the picture below



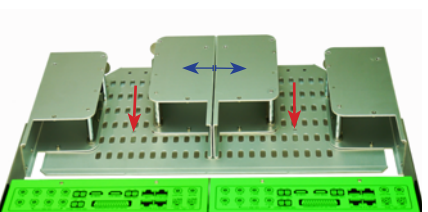
Step 1: Align the RXT 6001 rack holes pointed out in the picture below with the holes on the power supply mount on RFR 6000. Use countersunk screw 2.5mm to mount RXT 6001 rack hole marked as 1 on to the RFR 6000 Rack power supply mount hole marked as 1. Follow the same procedure for hole 2.



Step 2: Perform same operation on the other side of the extension rack frame. The final rack frame after installation of RXT 6001 extension rack will look as below



Note: The RXT 6001 extension rack comes with additional screw holes as marked in the picture which can be used to install power supply mounts at different position as required. **It is recommended to use rack rails to support the weight of power supplies and cables.**





HOW TO ASSEMBLE THE 19" MOUNTING BRACKETS AND ADJUST RACK POSITION

Step 1: Choose your desired rack position.



RECESSED

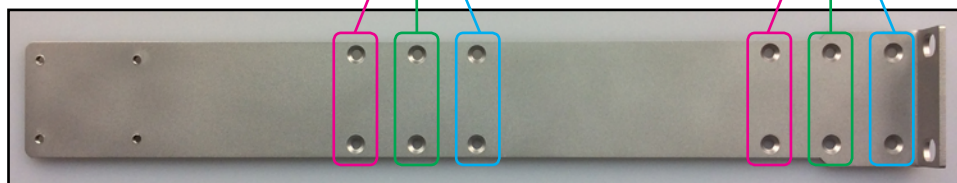
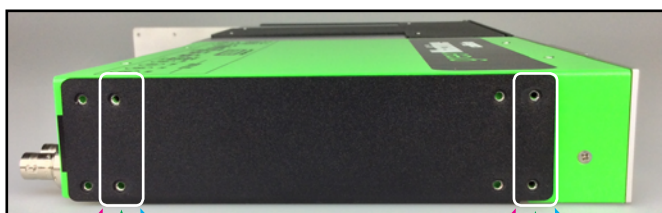


FLUSH



PROTRUDED

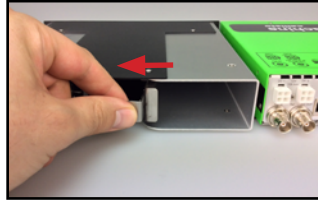
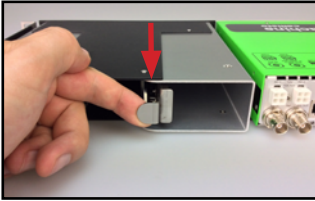
Step 2: Use the 3mm screws to assemble the mounting brackets.
Use 4x screws for each mounting bracket.



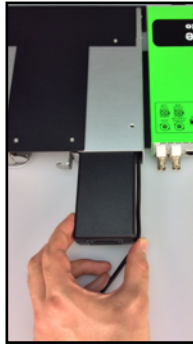


HOW TO INSERT THE RPS 6120 POWER SUPPLIES INTO THE RACK FRAME

Step 1: Unlock and slide over the power supply support clip.



Step 2: Insert the power supply that came with your greenMachine into the power supply mount. The power cable needs to be next to the power supply as shown below.



Note: The power supply should slide into the power supply mount without resistance. If not, then remove the power supply and make sure the power cord is positioned correctly.

Do not force the power supply into the mount.

Step 3: Slide over and push the power supply support clip forward to lock the power supply.



Step 4: Repeat this procedure for the second power supply if applicable.



SPECIFICATIONS

DEPTH	23.3cm (9.17") with RFR 6000: 48.05 cm (18.92")
WIDTH	19" Rack Extension
HEIGHT	1RU
WEIGHT	0.82 kg (1.8 lbs)
MODEL #	RXT 6001
EAN #	4250479326507