

not just a product...
it's a new way of thinking...

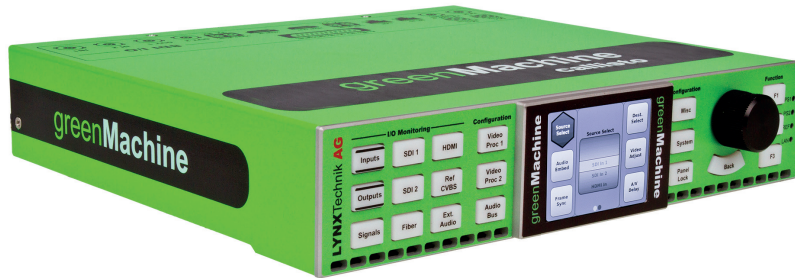
greenMachine[®]
something wonderful

THIS CHANGES EVERYTHING

Award Winning



*Received two awards within the first
3 months of product launch!*



greenMachine[®] is not just another piece of terminal equipment... it is a revolutionary approach and brand new concept that allows near instant customization, reconfiguration and expansion of your signal processing workflow.

Traditional rack frame systems such as the LYNX Technik Series 5000 are configured using dedicated boards for individual or a combination of processing tools, such as audio embedding/de-embedding, frame synchronization, format conversion/scaling, video adjustment, audio processing and more.

greenMachine changes the game by providing a powerful self-contained FPGA processing engine where the functionality is determined by running software applications. Think smart phone!

APPs are selected and purchased individually by the user via the greenStore[™] and can be combined in any combination on each signal channel and across an unlimited number of greenMachines.

CALLISTO...FIRST IN THE greenMACHINE HARDWARE SERIES

Callisto, the first greenMachine in the range is a two channel 3G-SDI hardware device housed in a 1U, 1/2 rack frame. greenMachine callisto can be used as stand-alone or rack mounted. One or two units may be mounted in the optional rackframe that also houses the off-board PSUs.

Only two PSUs are required to provide full redundancy for two greenMachines by connecting a link cable between modules.

Callisto will soon be joined by titan, a four channel 4K capable unit, then followed by callisto IP and titan IP. All units accommodate up to 3G-HD-SDI, analog or AES audio and HDMI in/outputs, with video cross-point switching at the input and output.

Fiber interfaces for 3G-HD-SDI and Gigabit Ethernet LAN control are via optional SFPs. IP models will support Video over IP.

THE TRUE FLEXIBILITY OF greenMACHINE

The flexibility of the greenGUI configuration software and the APPs are the real groundbreaking benefits of greenMachine. The greenGUI software (Windows and OSX compatible) is free to download and can be run in simulation mode to test and evaluate the software.

Current APPs are factory installed in the greenMachine hardware and can be fully configured and run on the hardware in any combination offering real-time signal processing for testing before purchasing licences, with just a watermark added to the output to prevent unauthorized use. Then, simply buy a licence either directly from the greenStore[™] or through an authorized reseller and download the key.

All you are downloading is the activation license key; a very small, quick to download file with virtually no possibility of corruption or delay. You can even download a key using a basic cellular phone data network. Keys can be downloaded on any Internet connected device and physically ported to a secure broadcast network via USB stick if required.



greenMachine callisto rack mounted in the optional rackframe with power supplies

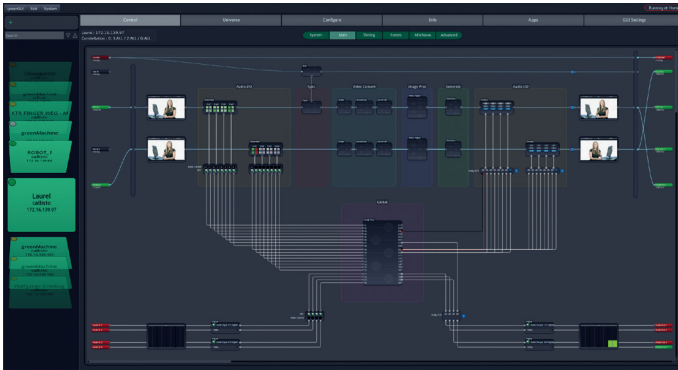
REVOLUTIONARY BENEFITS

And here's the revolutionary benefit! Once you own a licence for an APP, it can be moved to any greenMachine or networked array of greenMachines in what is called the greenUniverse.

For example: you need a frame synchronizer and scaler in a studio on one day and then need the same in an OB truck on another occasion when the studio is dark. Simply apply the APP configuration required to the OB greenMachine while it is connected to the network and the licences will be automatically transferred across the network.

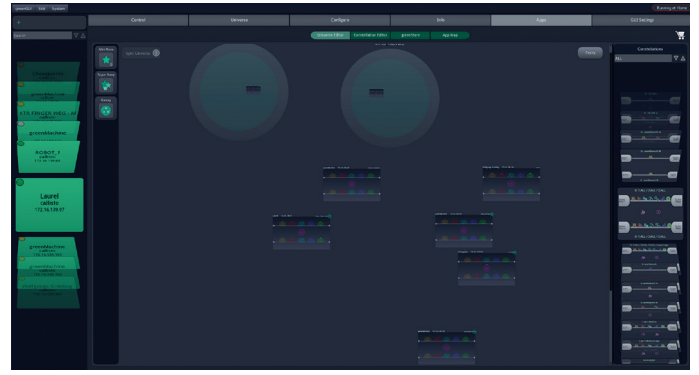
Licenses are perpetual and can be moved between any greenMachine devices with no limit to the number or frequency of reassignments.

Because the APPs reside in the individual greenMachines, the changeover is almost instantaneous. When in use, powered down or disconnected from the network, licenses applied to a greenMachine are 'locked in' so cannot be accidentally reassigned. Licenses not in use and released from a greenMachine 'float' in the greenUniverse and can be called into use in any connected greenMachine by using the greenGUI software application.

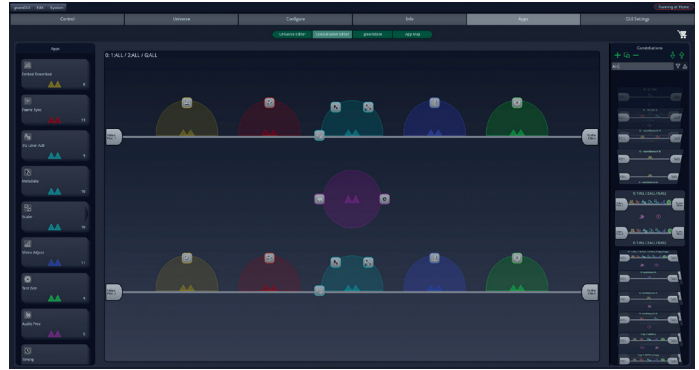


flexGUI / greenGUI - APP parameter config & image previews

Simply create and apply a 'Constellation' (configuration of APPs) and deploy it by dragging and dropping it to any greenMachine in the 'Universe.' If insufficient licenses are available, the greenGUI will indicate those required and automatically add them to its shopping basket. Licenses can be instantly purchased using a credit card or PayPal account or alternatively, an order can be placed with an authorized dealer who will supply a pre-paid voucher for use at the greenStore.



greenUniverse Editor - Deploy constellations



Constellation Editor - APP selection

greenMachine has full SNMPv2 support when the MiniNova APP is purchased, so will run under the control of most automation systems including; VSM, Dataminer, KSC Core, BNCS, etc. In an emergency, APPs and parameters can be configured via the front panel controls and preview images viewed on the integrated hardware display.

CURRENT APPs

Current APPs include: Frame Sync, 3G level A/B, Test Generator, Scaler, DeInterlacer, Video Adjustment, Embedder/De-embedder, Timing, MetaData, Audio Processor, Dual Transport (video/audio/GPI/Ethernet) and MiniNova. Many more coming soon....



By Dave Holloway, LYNX Technik AG

For full details and introduction videos please visit www.green-machine.com

