

# Series 5000 FLEXCARDS



## Deutsche Welle Chooses LYNX Technik AG® Signal Processing Solutions to Drive Television Multicasts

### DEUTSCH WELLE

www.dw-world.de  
Berlin, Germany

### LYNX Technik FLEXCARDS

#### PVD 5612 B/D

HD/SD Dual Channel  
Frame Synchronizer

#### PVD 5630-1 B/D

HD/SD Dual Channel  
Frame Synchronizer

- optional second input,
- optional down conversion

#### PVD 5660 B/D

Dual HD/SD Frame Sync  
+ Arc

#### PIE 5610

Multi-format Image  
Processing Engine

*"The LYNX Technik solutions are fault-tolerant offering us unprecedented levels of quality and reliability and we have been able to leverage their solutions to continue to build our business."*

-- Michael Leder,  
Technical Support /  
Planning Department &  
Engineering Maintenance,  
DW-TV

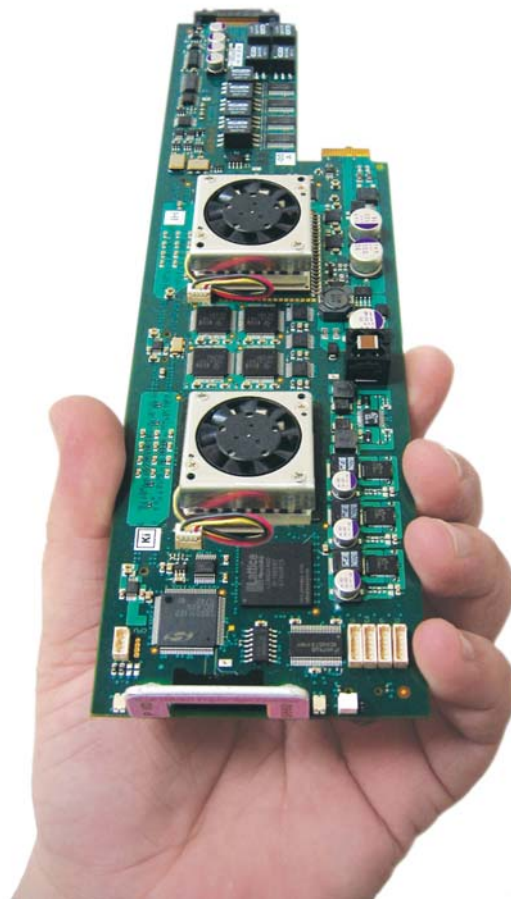
Deutsche Welle (DE), the official foreign Broadcast Service of Germany, with its Television facilities located in Berlin, is using their Series 5000 signal processing products to equip and upgrade its broadcast television production operations.

Deutsche Welle is an internationally recognized German public television station.

The TV Network of DW are using the LYNX Technik Series 5000 signal processing modules to support a multitude of television stations in their network providing content and programming 24 hours a day, seven days a week, broadcasting around the world in a multitude of languages.

DW opted to replace their outdated signal processing equipment with the LYNX Technik Series 5000 solutions due to its high degree of quality, flexibility, and a series of unique features that sets it apart from competitors. Many of the Series 5000 boards offer the flexibility of being dual channel devices, offering DW enhanced functionality for signal processing and distribution.

In particular, the PVD FLEXCARD Frame Synchronizer modules provide seamless switching between 2 input sources – The optional fully featured second input option converts the modules into dual-channel devices. Plus full audio processing is included for embedded and external AES audio.



FLEXCARDS include an integrated test pattern generator for each output channel and offer multi-format operation, which provides a straightforward HD upgrade path.

Specific FLEXCARD modules offer firmware plug-in options, including; Down Conversion, Up/Down/Cross Conversion, AFD/Closed Caption/Timecode processing, offering an extremely versatile, configurable solution that meets specific signal processing requirements.

Each compact 2 RU frame of LYNX Technik equipment can mix and match SD and HD signals, and features a high packing density of a mix of up to 10 boards, and up to 20 signal paths. DW is using a combination of Frame Synchronizers, Embedders, De-Embedders, and Distribution Amplifiers.

A full HD upgrade is currently underway at Deutsche Welle and is expected to be complete in 2011.

DW required a system that could easily scale, easily upgrade to HD, and be easily monitored and controlled through their existing network. Via a network, the Series 5000 racks are configured quickly and easily through a PC. The LYNX Technik control system delivers a powerful solution for remote control, status monitoring and SNMP error reporting for all installed modules. This enables DW technicians and engineers to easily and quickly monitor signals on their network anywhere in their facility. The control software "self-configures," meaning that anytime a new piece of hardware is connected to the system, it automatically adapts to the new system configuration.



LYNX Series 5000 Racks installed at DW-TV



"LYNX Technik has always provided us with turnkey service and technical support, as well as regular updates from their engineering and management team about new product releases and updates. LYNX has in-depth knowledge and experience of our operations and are committed to continually meeting our needs and challenges," comments Michael Leder, Technical Support / Planning Department & Engineering Maintenance at DW-TV. "The LYNX Technik solutions are fault-tolerant offering us unprecedented levels of quality and reliability and we have been able to leverage their solutions to continue to build our business."

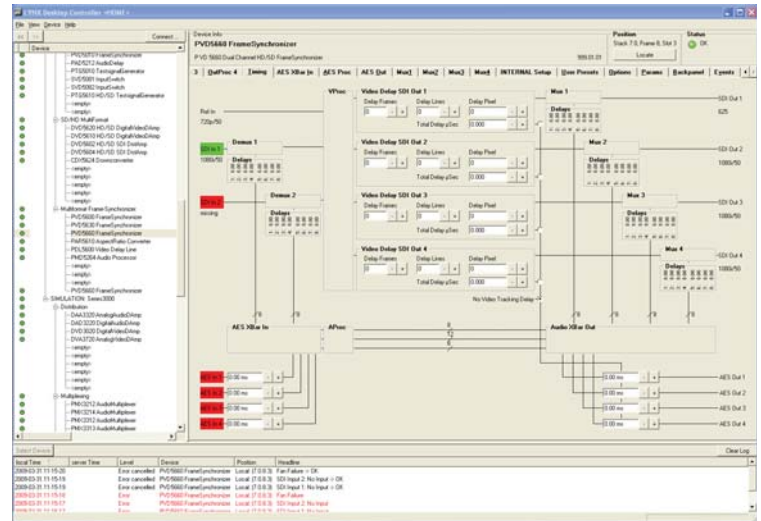
*“Deutsche Welle uses a state-of-the-art hardware and software environment to produce and distribute content to millions of people, and we committed to meeting their requirements. We take pride in delivering high quality, flexible, and extremely robust systems that meet the demands of broadcasters now and in the future.”*



**- Winfried Deckelmann**  
**CEO LYNX Technik AG**

### About Series 5000

The Series 5000 CardModules use advanced analog and digital signal processing technology. Through the use of programmable FPGA devices we use own firmware cores to deliver advanced signal processing solutions. Each module has an integrated controller and onboard flash RAM for storing module configurations. Modules are fully compatible with the LYNX control system, which provides remote control, status monitoring and error reporting. The architecture of the Series 5000 allows you to add new features and functionality as your system demands grow. Simply reprogram the module with new firmware and you are ready to go.



LYNX Technik Desktop FLEXCARD Controller



PVD 5660 FLEXCARD

### About FLEXCARDS

FLEXCARDS are traditional rack and card based terminal equipment solutions, featuring a high quality and flexible range of SD and HD products for conversion, distribution, embedding and de-embedding, frame synchronization, audio delay and test signal generation. FLEXCARD modules are designed all around flexibility. Invest in the functionality you need right now, and upgrade quickly by purchasing new features in the future. All cards are shipped fully loaded with all firmware options pre-installed – users simply purchase license codes to activate the options they need.

### FLEXCARDS include:

- PVD 5612 B/D - HD/SD Dual Channel Frame Synchronizer with Full Audio Support
  - optional second input
- PVD 5630-1 B/D - HD/SD Dual Channel Frame Synchronizer with Full Audio Support
  - optional second input, down conversion
- PVD 5660 B/D - FLEXCARD - Dual HD/SD Frame Sync + Arc with Full Audio Processing
  - optional second input, up / down / cross conversion
- P IE 5610 - FLEXCARD - Multi-format Image Processing Engine
  - optional ARC, Noise Reduction, Up/Down/Cross conversion, Video Delay

**Headquarters**  
 LYNX Technik AG  
 Brunnenweg 3  
 D-64331 Weiterstadt  
 Germany  
 PH: + 49 (0) 6150 1817 0  
 FX: + 49 (0) 6150 1817 10  
 web: www.lynx-technik.com  
 email: info@lynx-technik.com