

19" 1RU Rack Frame for greenMachine



Features

- Standard 19" rack mount
- Compact 1RU design
- Accommodates one or two greenMachines
- Innovative mounting options for up to two RPS 6120 power supplies (primary and redundant)
- Forward rack position adjustable to recessed, flush or protruded
- Includes RPB 6000 power bridge cable

Description

The greenMachine is ideally suited for standalone "desktop" applications. However, rack mounting preferred in some situations. For larger permanent system installations where multiple greenMachines are used, rack mounting is essential.

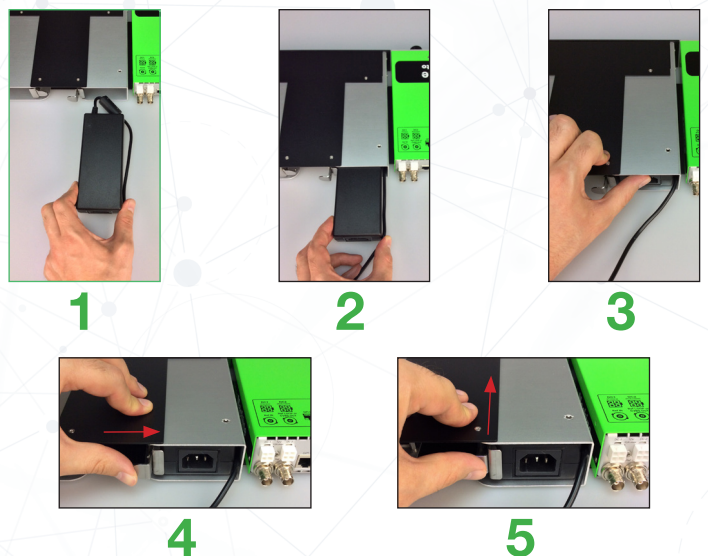
The RFR 6000 is a compact 19" rack mounting solution occupying 1RU of vertical rack space. It can be configured to accommodate one or two greenMachines. In either configuration the RFR 6000 also provides innovative mounting options for one or two of the external RPS 6120 "brick" power supplies both of which can be securely mounted within the 19" 1RU footprint.

The RPB 6000 power bridge cable is also included. This cable provides power redundancy when the frame is configured for two greenMachines using dual power supplies. Simply cross connect the power connections of both greenMachines with the power bridge cable and each greenMachine shares the two power supplies for primary and redundant power protection.

Power Supply Mounting

The greenMachine includes the RPS 6120 primary power supply, which is an external desktop "brick" style power supply. An optional second power supply can be added for redundant protection. When installing the greenMachine into the RFR 6000 rack frame we have provided two separate power supply "caddies" each of which can securely accommodate an RPS 6120 brick power supply.

Installation is simple and requires no tools and provides easy access should the power supply need to be removed or replaced. The power supply caddies can be relocated to the rear of the frame when two greenMachines are installed.



RFR 6000

greenMachine[®]

something wonderful

RFR 6000 used for 1 greenMachine



The RFR 6000 shown with a single greenMachine installed. One or two power supplies are installed where shown making this a self contained rack mount system.

The frame can be easily reconfigured to accommodate a second greenMachine if required.

RFR 6000 used for 2 greenMachines

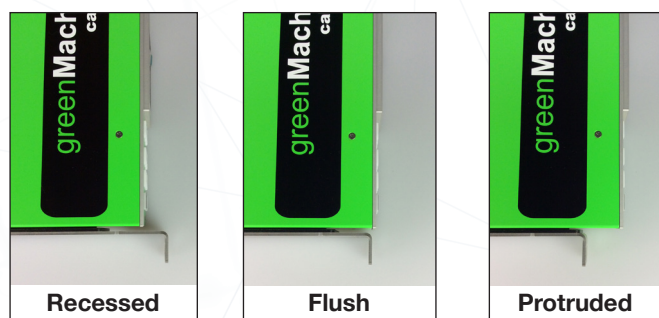


The RFR 6000 shown with two greenMachines installed.

The unit is reconfigured to relocate the power supply caddies in the rear of the frame as shown.

Using the included RFR 6000 bridge cable two power supplies can be used to provide primary and redundant power protection for both installed greenMachines.

RFR 6000 Rack Rail Position



The rack rail position can be adjusted to set the position of the greenMachine in relation to the front of the rack frame. This can be set to recessed, flush or protruded depending on preferences and surrounding equipment.

Specifications

Height	1RU
Width	Standard 19" Rack Mount
Depth when configured for single greenMachine	29.7cm (11.69")
Depth when configured for two greenMachines	44.7cm (17.59")
Weight	1.5 kg (3.31 Lbs) - (Empty - no equipment installed)
Model #	RFR 6000 - (EAN# 4250479324466)
Includes	RFR 6000 rack frame. RFB 6000 power bridge cable Phillips screwdriver Quick reference guide

Note: Some assembly is required.

Please visit www.green-machine.com for more information on greenMachine