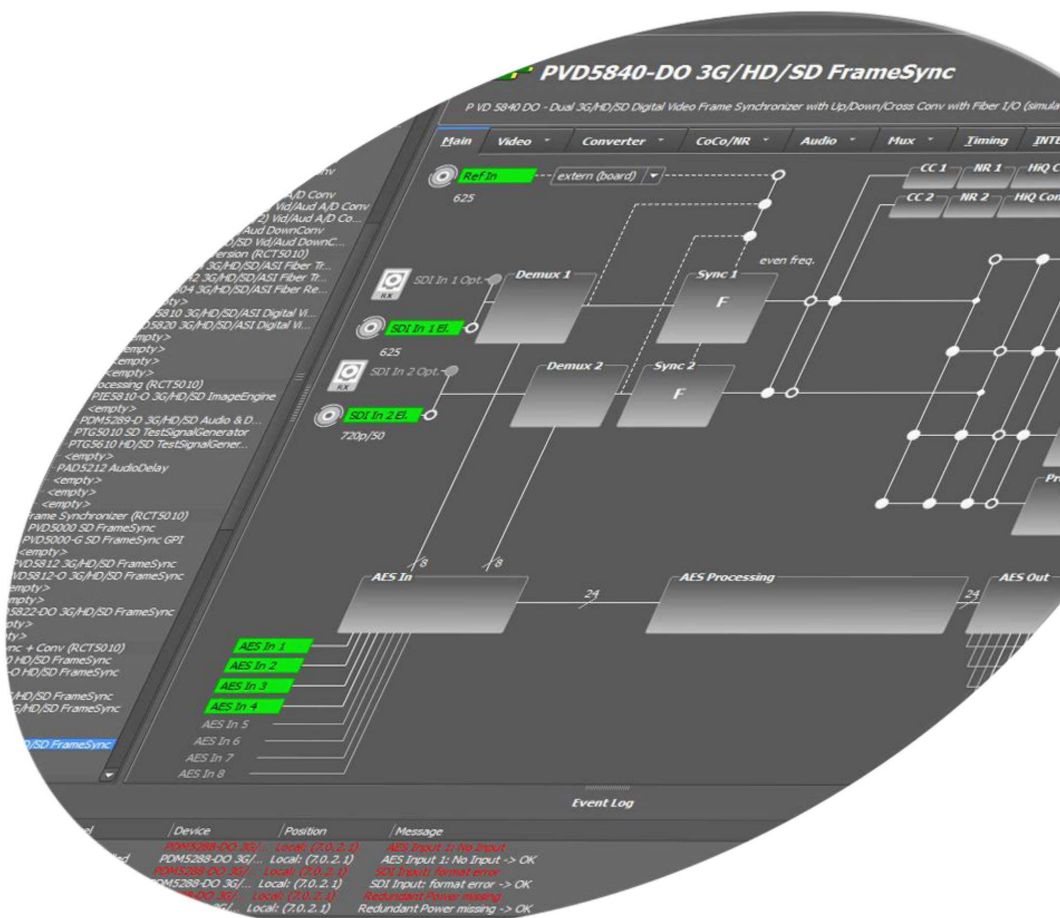


# APPolo | **Control**™

## APPolo **Control** User Guide

Revision: 1.2 RELEASE  
Last Updated: May 2014  
Service Contact: [support@lynx-technik.com](mailto:support@lynx-technik.com)



## Contents

Getting Started.....	2
Network Connections.....	2
Network Configuration .....	3

## Getting Started

Download the LYNX APPolo Control GUI from <http://appolo.lynx-technik.com>, to setup and configure a LYNX system from a PC. The APPolo GUI can be disconnected after the system has been configured (because all settings of all devices are automatically stored in the module's flash RAM). Alternatively, the APPolo GUI can stay connected permanently for monitoring and real time status updates from the system.

- 1) download APPolo Control GUI from <http://appolo.lynx-technik.com>
- 2) Save this Setup file (APPoloControlGUI...exe) to your Windows desktop.
- 3) Then double-click (execute) this file to start the installation process

*NOTE: Minimum system requirements:  
Microsoft Windows 7 or XP-SP3, 500MB RAM, 250MB HDD*

## Network Connections

The LYNX APPolo GUI will communicate to the LYNX RackFrames over the IP network. Therefore, the first important step is to make sure that the LYNX Components and the PC are using compatible IP network settings. By factory default, the LYNX Components are configured with the following FIXED IP addresses:

LYNX RackController (RCT502x)	<b>192.168.1.162</b>
LYNX SERVER (RCT5023_SERVER or RCT5031)	<b>192.1.168.160</b>

*NOTE: The described steps below refer to a new LYNX Controller or LYNX SERVER with their respective IP addresses set to the factory defaults.  
The IP settings can be reset to the factory defaults by pressing the RESET BUTTON on the card edge for more than 5 sec.*

## Network Configuration

1. Physically connect the LYNX RackFrame(s) and your PC to an IP network:

The LYNX RackFrame has a LAN connection on the rear panel (marked in yellow color). Use a standard network cable to connect directly to a PC (for simple point to point control) or connect to your facility network

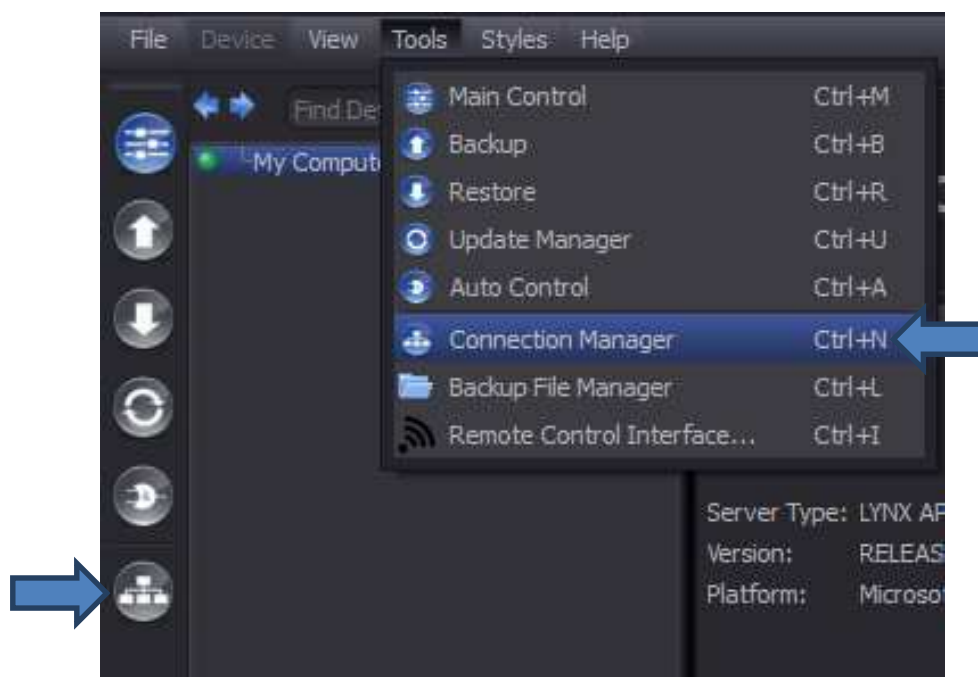
*NOTE: After applying power, please allow for 1-2 minutes to boot the LYNX Server*

2. If you have connected the PC to the LYNX Rack Frame with a direct 1-to-1 cable, assign the static IP address 192.168.1.100 to your PC (using the Windows Control Panel -> Network Configuration Tools).

*NOTE: If the connection is made through a facility network (i.e. including a DHCP service), then skip this step.*

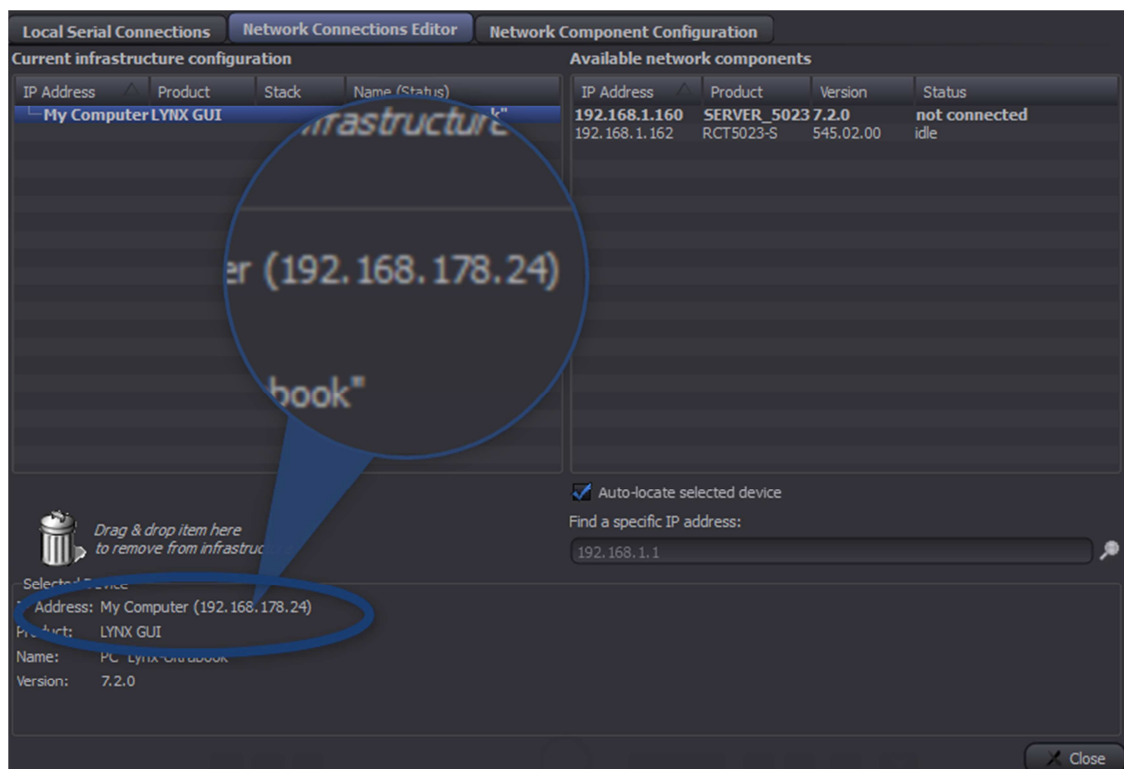
3. Start the APPolo Control GUI application on your PC by double-clicking the desktop icon

4. Open the "Connection Manager" from the menu bar or from the "Tools" menu. This opens the Connection Manager dialog window.



5. In the Connection Manager Dialog Window, select the MIDDLE tab ("Network Connections Editor"). The dialog is divided into two columns:
  - a. The left side shows the current system configuration. You should see an entry "LYNX GUI" here.
  - b. The right side shows all available system components (detected automatically). This list should show all of your LYNX RackController(s) and LYNX SERVER(s).

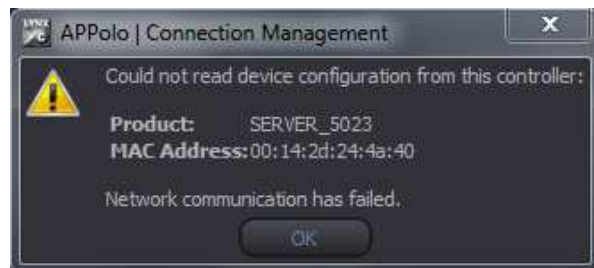
This Editor will be used to connect your LYNX components to the GUI. But at this time, the LYNX RackController and/or LYNX SERVER (shown in the list on the right side) may be using an IP-address that does not match your network. In this case you need to change the IP-settings of these LYNX components before you can connect to them. Before changing the IP address you need to make note of the current IP address of the APPolo Control GUI (My Computer) entry in the left list. This will be anything, normally assigned by your network DHCP server, but let's assume it is 192.168.178.24



6. In the Connection Manager Dialog Window, select the RIGHT tab ("Network Component Configuration"). This is where individual IP settings can be applied to LYNX network components.

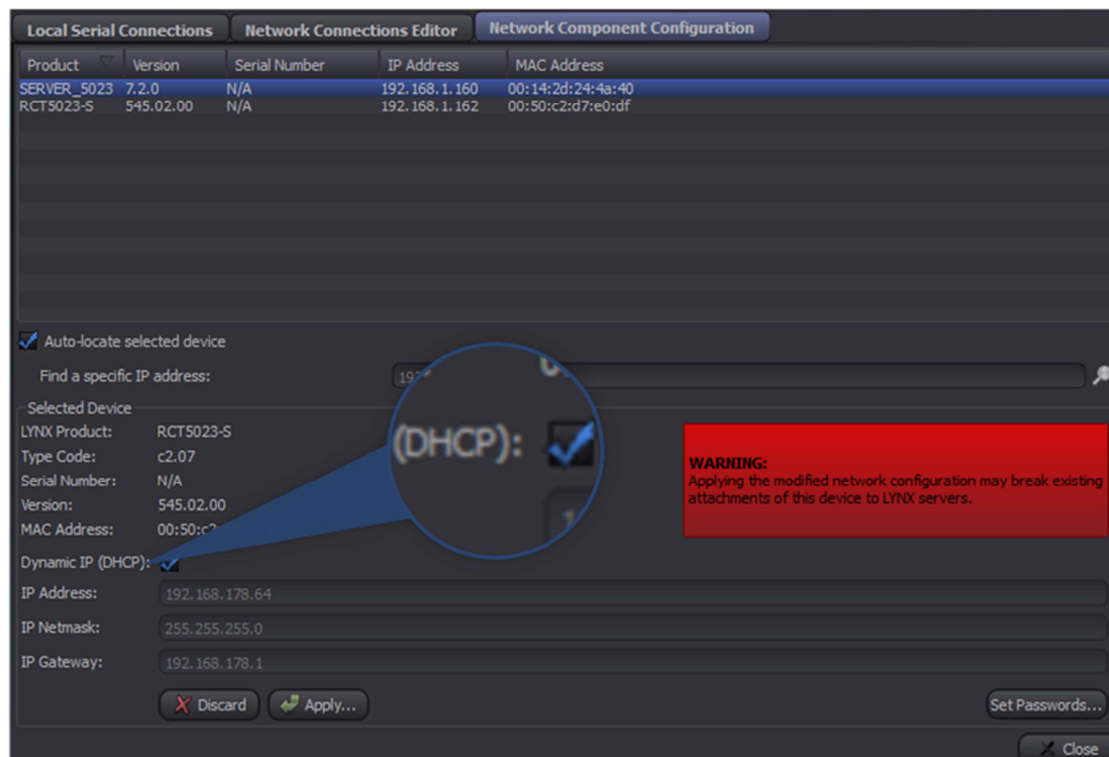
*NOTE: If you have modified the IP address of your PC in step 2 above, then skip this step.*

As the IP addresses of the LYNX RackController and/or LYNX Server normally do not match your network domain, there might be a popup-message message as shown here. Just click on "OK" to proceed.



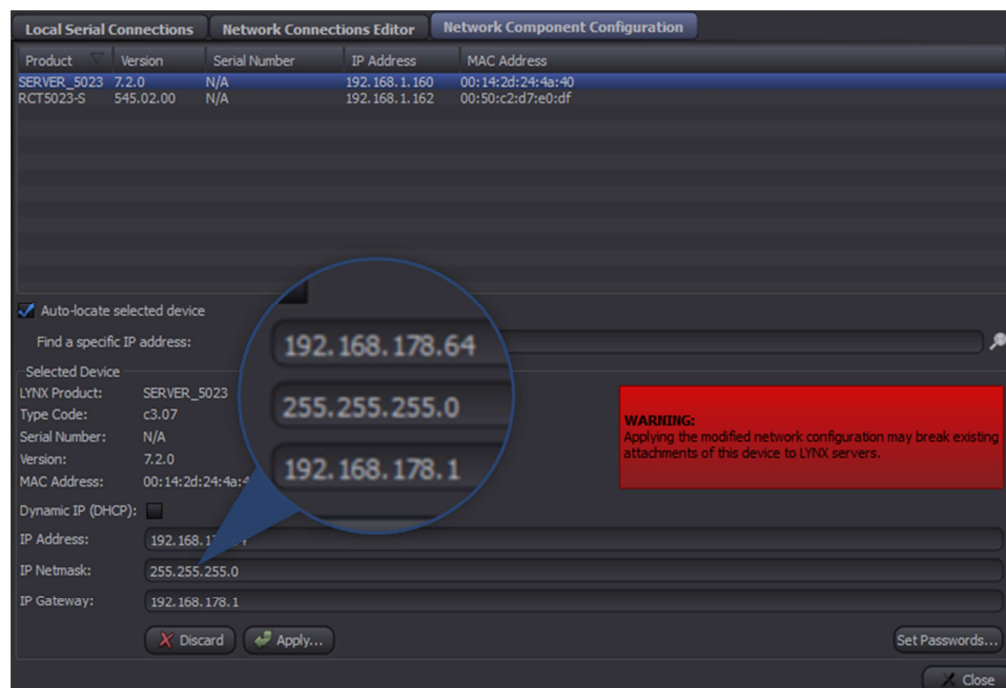
Select the LYNX RackController or LYNX Server in the list and do one of the following:

- a. If the system is connected to a network and you have a DHCP server: Activate the DHCP checkbox (so that the LYNX Controller can obtain an IP address automatically)



- b. If you need to set the IP address manually, then you need to set the IP address of the LYNX RackController and/or LYNX Server for the same network-region as your PC (refer to the IP address of your PC – MyComputer, which you had noted in step 5).

For example in this case you could set the IP to 192.168.178.64. The subnet mask is usually 255.255.255.0. Make sure to enter something for the gateway (even if not needed, but you have to put a number in there). For example, the gateway can be set to 192.168.178.1



- c. In any case (a) or (b), click on the "Apply" button to apply your changes. You will be asked to enter the admin password. The default (factory setting) "admin" password is lynx\$admin.



Repeat the above steps (a) or (b) for all LYNX RackControllers and LYNX Servers which need to be connected to your network

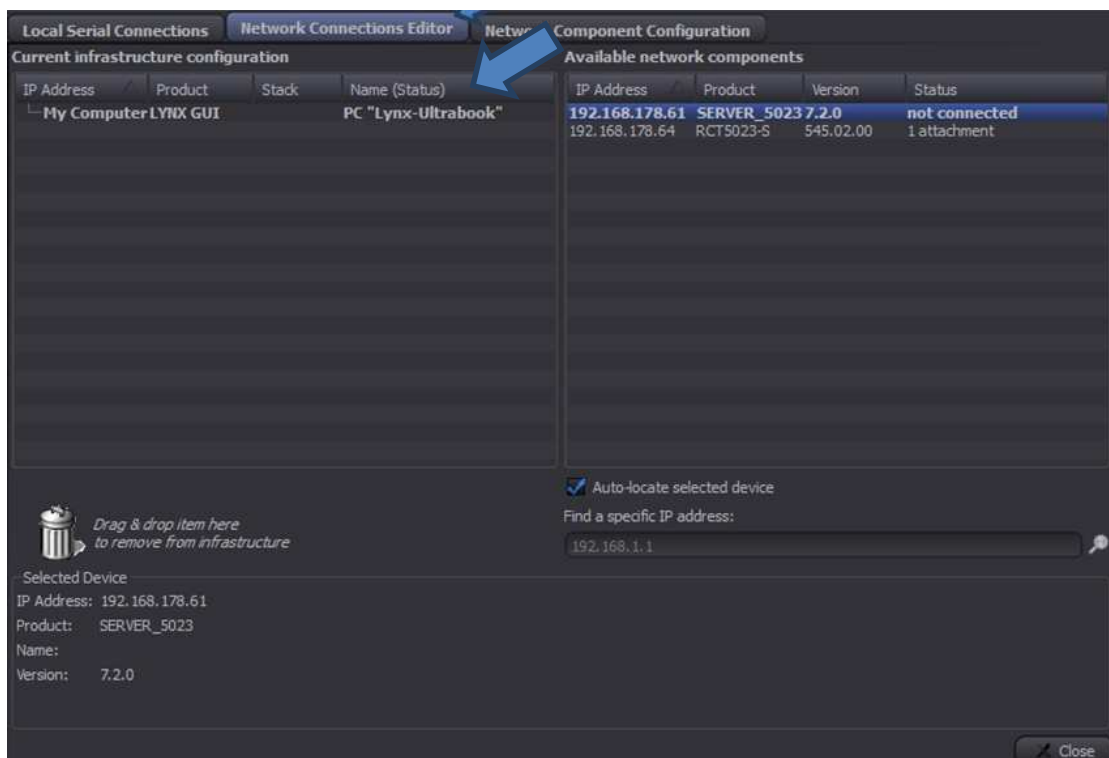
*NOTE: If your LYNX component is not shown in this list, then you can connect (through a 1-to-1 connection to the respective rack frame) a regular web browser to the current IP address of the LYNX chassis, login as user "admin" and make the IP settings on the "System" page.*

The default **FIXED** IP addresses are:

LYNX RackController (RCT502x) **192.168.1.162**  
LYNX SERVER (RCT5023\_SERVER or RCT5031) **192.1.168.160**

7. Now go back to the MIDDLE tab of the dialog window ("Network Connection Editor")

Here you should see the LYNX RackController and LYNX Server in the RIGHT column (now with their new IP addresses). Now you can connect the components and configure your system. Simply drag and drop any LYNX device from the right column into the left column.



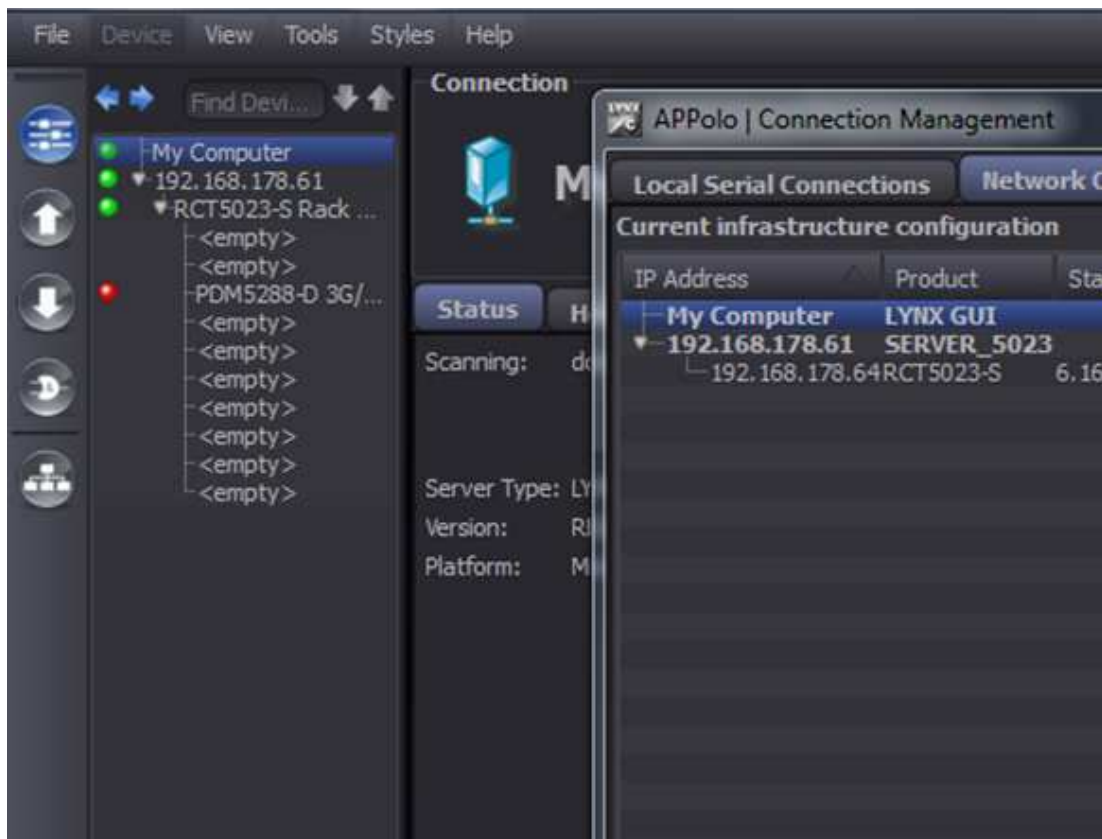
- a. If the LYNX device on the right is a LYNX Server (e.g. SERVER\_5023 or RCT5031) and shown in bold characters, then just drag&drop it into the empty space on the left. This will connect that LYNX Server to the APPolo Control GUI, indicated by a green Status indication "connected"

*NOTE: A LYNX Server (SERVER\_5023 or RCT5031) is a stand-alone system. The GUI can be connected to this system for monitoring and configuration as shown here. But that system will continue to work even the GUI has been logged out again.*

- b. If the LYNX devices on the right is a RackController (e.g. RCT5023 G) and shown in regular (non-bold) characters, then drag&drop it onto one of the already existing systems on the left hand side (either the GUI, or a LYNX Server that has previously been connected as shown in (a) above). This will attach this RackController to the selected System and make it work as part of that system.

*NOTE: A LYNX RackController can be attached to max. three different Servers*

8. If all went well then you should now see devices populate the navigation tree on the left on the MainControl window in the APPolo Control GUI. You can now close the Connection manager dialog window and return the the APPolo GUI Main Window.





9. In the APPolo GUI Main Window, select an individual processing device from the tree on the left side. The GUI will then display the control interface for this particular device in the main control area.
  - a. The current status of all information is always updated "live".  
E.g. when the current video input is removed, the GUI will update the appropriate status information immediately  
(usually within ~500 msec)
  - b. Any changes to the configuration of a card (by mouse-click in the GUI) are communicated directly to the device and made effective.  
I.e. it is not required to trigger a "take-over" function or similar, for any change to become effective.

<i>Document</i>	<i>LYNX_APPolo_QuickStart_V1.2.docx</i>
<i>Last Printed:</i>	<i>28.05.2014 13:29</i>