

Dual SDI / ASI Distribution Amplifier

Description

Featuring dual mode operation with clocked or non re-clocked operation the D VD 5021 is a versatile solution for SDI / ASI distribution applications within any system. The D VD 5021 can be used as a single 1>8 or a dual channel 1 > 4 device. Each channel can be independently clocked or non-reclocked. This module is ideally suited for demanding high quality broadcast and professional video applications.

In re-clocked mode the module will auto-detect standard video bit rates (143, 177, 270, 360 and 540Mbits/s) and transparently pass data from 10Mbits.s to 640Mbits/s when set to non-reclocked mode.

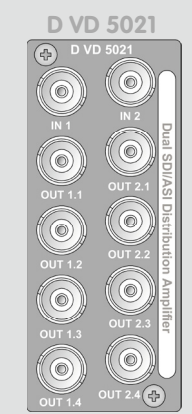
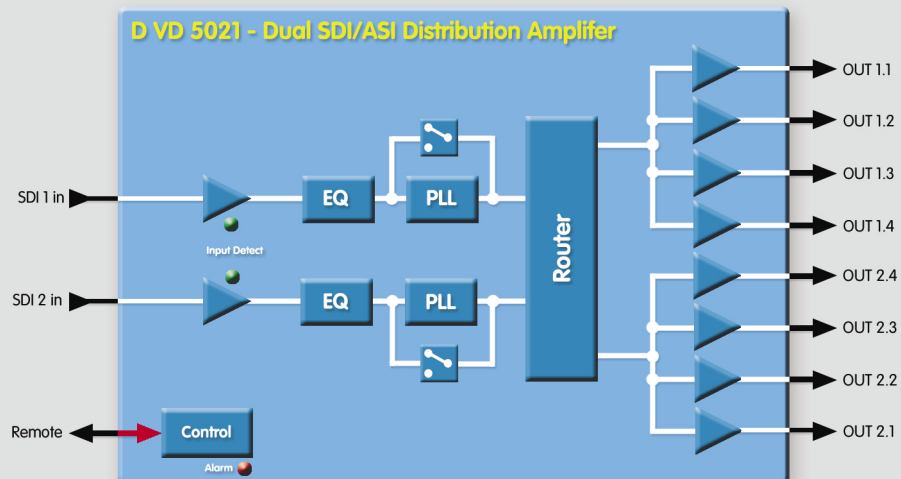
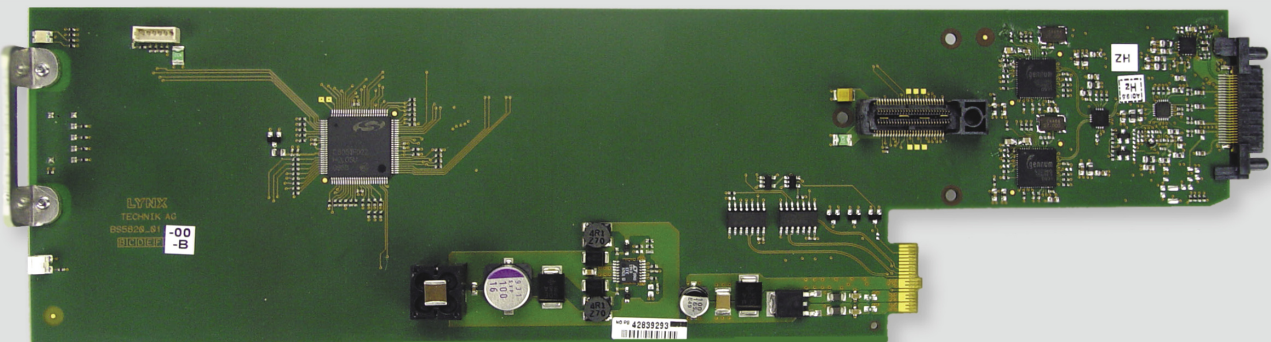
The module is also supports ASI / DVB and SMPTE 310 signals.

Microprocessor control and on board flash ram enable configurations and settings to be stored within the module (through power cycles and module removal).

Local control capability is provided via the integrated dip switch and multifunction switch. Remote control, status monitoring and SNMP error reporting is possible when using the LYNX control system

Features

- Suitable for ISDTV SDI /ASI and SMPTE 310 signals
- Dual mode operation 1>8 or dual 1>4
- 2 x 2 Signal router for flexible output configurations
- Each channel can be clocked or non-reclocked
- Auto detect video bit rates of 143, 177, 270, 360, 540Mbits/s
- Transparently pass data between 10 and 640Mbits/s in non-reclocked mode.
- Microprocessor controlled with internal flash ram for storing configuration
- Remote control, status monitoring and error reporting possible when used with LYNX control system
- Full SNMP support when used with master controller option
- Hot Swappable



Backplane

Dual SDI/ASI Distribution Amplifier

Specifications

Video Inputs

Signal Type	Serial Digital Video SMPTE 259M, ABCDE DVB-ASI and SMPTE 310
Input Impedance	75 Ohms
No. Of inputs	2
Connector	BNC
Return loss	> 15dB (270MHz)

Video Outputs

Signal Type	Serial Digital Video SMPTE 259M, ABCDE DVB-ASI and SMPTE 310
Output impedance	75 Ohm
No. Of Outputs	8 (2x4)
Connector	BNC
Return loss	> 15dB (270Mbit)
Jitter	< 0.20 UI (270 MHz) - in relocked mode

Performance

Cable equalization	Up to 250M using Belden 8281 (270Mbit)
Control	Local settings using on board dip switches. Remote control possible when used with LYNX controller
Status monitoring (LED)	Signal presence for each input plus general alarm

Operation modes

Single channel	Single 1>8 (either input can be mapped to the 8 outputs)
Dual channel	Dual 1 > 4
Re-clocking	Clocked or non re-clocked operation (each channel, selectable)

Electrical Specifications

Operating Voltage	12 VDC
Power Consumption	< 3W
Safety	IEC 60950/ EN 60950/ VDE 0805

Mechanical

Size	283mm x 78mm
Weight	CardModule 120g, connector plate 50g

Ambient

Temperature	5°C to 40°C Maintaining specifications
Humidity	90% Max non condensing

Specifications subject to change

Settings and Control

Local Settings

Re-clocking	clocked / non re-clocked
Modes	Dual channel = 2 x 1>4 Single channel = 1 x 1>8 (using input 1) Single channel = 1 x 1>8 (using input 2)

Settings Available from Control System

Local controls duplicated. No additional parameters provided via the control system

On Board Indicators / LEDs

Input 1 Present / No Input
Input 2 Present / No input
General Alarm Indicator – 3 Color

Ordering Information

Model #	Part Number	Description	Includes
D VD 5021	6155035021	Dual SDI / ASI Distribution Amplifier	CardModule, Rear termination Panel, + Mounting Screws, and Reference Manual