

LYNX

Distribution

D VA 5760 L

SDTV / HDTV

SERIES 5000

CardModules

SD/HD Analog Video / Sync Distribution Amplifier

Description

The D VA 5760 L is a flexible and cost-effective solution for high quality SD and HD analog video or sync distribution. The module has one input with passive loop through and 16 outputs. This module is ideally suited for demanding high quality broadcast and professional video applications.

Adjustable video gain and equalization is provided for system calibration. Inputs can be AC or DC differential coupled with or without input clamping (selected via the APPolo control system)

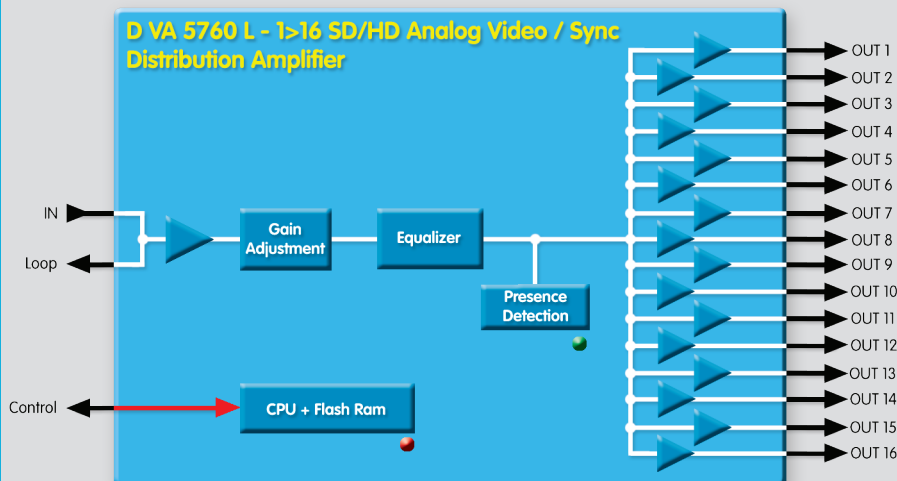
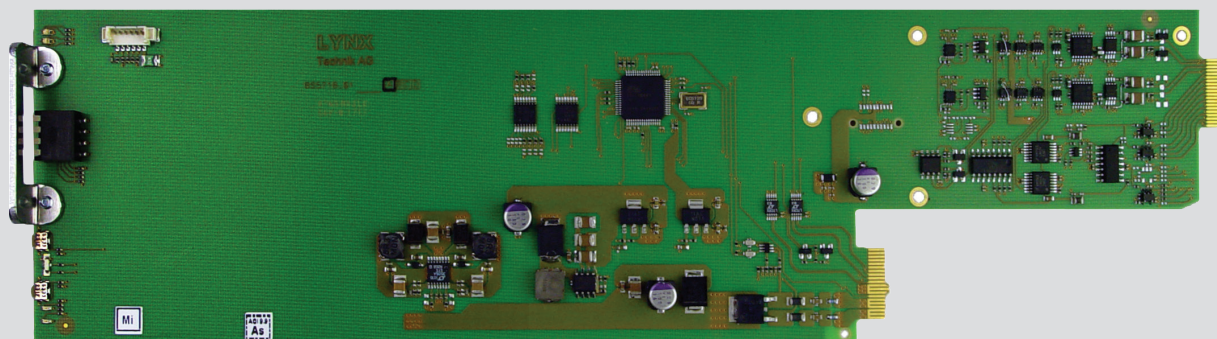
The module also functions as a Sync Distribution Amplifier for HD tri-level or SD bi-level sync inputs.

Microprocessor control and on board flash ram enable configurations and settings to be stored within the module (through power cycles and module removal). Local control capability is provided via the integrated dip switch.

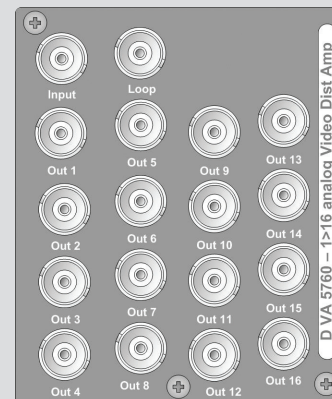
The LYNX APPolo Control System manages remote control, status monitoring, and error reporting for the module.

Features

- High quality 1>16 distribution amplifier
- 30MHz wide band distribution amplifier for both SD and HD analog video sources
- Supports SD bi-level and HD tri-level analog sync
- Passive input loop through
- Signal presence detection
- Adjustable video gain
- Adjustable cable equalization
- Selectable input clamp (via control system)
- Selectable AC or DC coupled differential inputs (via control system)
- Microprocessor controlled with internal flash ram for storing settings
- Remote control, status monitoring and error reporting possible when used with LYNX APPolo control system.
- SNMP error reporting when used with RCT 5031 master controller option
- Hot Swappable



D VA 5760 L



Backplane

Double width back panel and will occupy two rack slots in the RFR 5012 chassis

D VA 5760 L
DISTRIBUTION

SD/HD Analog Video / Sync Distribution Amplifier

Specifications

| Video Inputs | |
|---------------------------|---|
| Signal type | Video: SD or HD Analog video Sync: SD or HD (tri-level) Sync |
| Input coupling | Differential AC or DC (selectable via control system) |
| Input impedance | 75 Ohms |
| No. of inputs | 1 (with passive loop through) |
| Connector | BNC |
| Input clamp | ON/OFF (selectable via control system) |
| Return loss | > 31dB to 10MHz |
| Common mode rejection | > 65dB to 10KHz |
| Max input level | 2v (peak to peak) |
| Video Outputs | |
| No. Of Outputs | 16 amplified and equalized, with 1 passive loop through of input. |
| Signal type | Analog Video |
| Return loss | 40dB to 10MHz |
| Phase match | < 0.1 degrees at 4.43MHz |
| Response variation | < 0.15dB to 16 loads |
| Connector | BNC |
| Output impedance | 75 Ohms |
| Adjustment range | -3dB to +3dB in 50 increments |
| Performance | |
| Frequency response | +/- 0.1dB to 30MHz, -3dB at 66MHz |
| Differential gain | < 0.60% |
| Differential phase | < 0.4 degrees |
| Hor / vert tilt | < 0.5% |
| Signal to noise ratio | > 69dB to 17MHz (RMS noise/700mv, unweighted) |
| Hum | < 0.5 mv |
| Gain | -3dB to +3dB in 50 increments |
| Cable equalization | Adjustable for up to 200m SDTV or 100m HDTV using Belden 8281 |
| Control | Local settings using on board dip switches. Remote control possible when used with LYNX APPolo control system |
| Status monitoring (LED) | SD/HD signal presence / general alarm |
| Electrical Specifications | |
| Operating voltage | 12 VDC |
| Power consumption | < 3W |
| Safety | IEC 60950/ EN 60950/ VDE 0805 |
| Mechanical | |
| Size | 283mm x 78mm |
| Weight | CardModule 120g, connector plate 100g |
| Ambient | |
| Temperature | 5°C to 40°C maintaining specifications |
| Humidity | 90% Max non condensing |

Specifications subject to change

Settings and Control

| Local Settings | |
|--|-------------------------------------|
| Adjustment selection | Gain or equalization |
| Unity selection | yes / no |
| Adjustment | Adjust gain or equalization UP/DOWN |
| Settings Available from APPolo Control System | |
| All local controls duplicated. Additional parameters provided via the control system listed below: | |
| AC or DC input coupling | Select AC or DC |
| Input clamp | ON/OFF |
| On Board Indicators / LEDs | |
| Signal present / no input | |
| General alarm indicator – three Color | |

Note: This module has a double width back panel and will occupy two rack slots in the RFR 5012 chassis

Ordering Information

| Model # | Part Number | Description | Includes |
|-------------|-------------|--|---|
| D VA 5760 L | 6155005760 | SD/HD Analog Video / Sync Distribution Amplifier | CardModule, rear termination panel, + mounting screws, and reference manual (on CD) |