

# R FR 5041

**SERIES 5000**

**CardModules**

## 1RU Rack Mount Chassis + Power Supply

### Description

The RFR 5041 1RU Rack Mount Chassis is provided for applications requiring a small number of modules and will accommodate up to 4 Series 5000 CardModules. Each CardModule slot has its own associated rear connection panel, so any mixture of modules can be accommodated with no configuration restrictions.

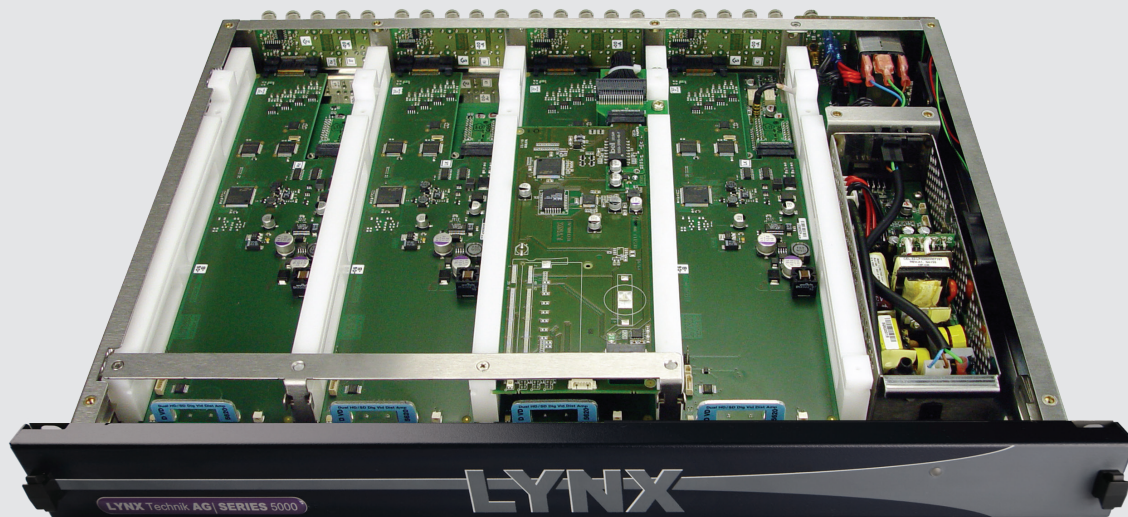
The frame includes a removable primary power supply and an external DC input for an optional redundant power backup is also provided. Remote control is possible via the integrated LAN port using the included LYNX APPolo control software. External GPO alarm outputs and an external sync input are also provided. All of the installed modules, plus the power supply are hot

swappable and are easily accessed from the front of the rack. The front panel is hinged for easy access and can be removed if required. Integrated low noise fans provide for system cooling.

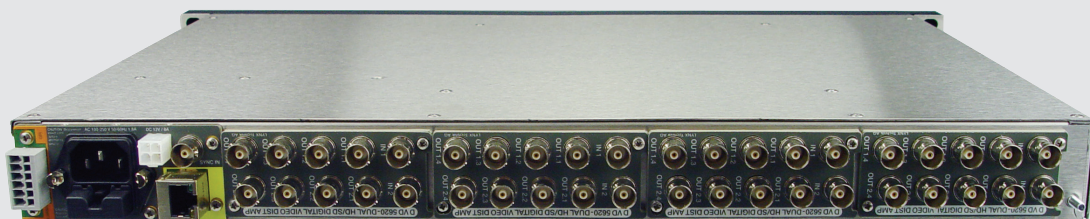
The construction is extremely robust, suitable for studio installations and the most demanding mobile applications. The frame is constructed from non magnetic stainless steel and is fully compliant with all EMC / FCC RFI interference emission regulations.

### Features

- High quality steel construction, 1RU high
- Compact, very small depth, ideal for mobile applications
- Accommodates any mixture of Series 5000 modules
- Supports up to 4 modules + primary power supply
- Optional external "brick" power supply for redundant protection
- Integrated 10/100 LAN port for remote control
- Includes desktop controller software package
- External rack reference sync input (bi-level or tri-level)
- Power supply GPO alarm outputs
- Integrated cooling, low noise fans
- Hinged front panel, which can be removed if required
- All modules hot swappable



Rack shown with top cover removed to show internal layout - 4 x Series 5000 CardModules fitted with primary Power Supply



# R FR 5041

SERIES 5000

CardModules

## 1RU Rack Mount Chassis + Power Supply

### Specifications

Mechanical	
Size	1 RU high x 360mm deep
Mounting	Standard 19" rack mount
Weight (empty)	4.5Kg (with power supply - no modules installed)
Connections	All connections of rear of rack frame
Capacity	
Processing Modules	Up to 4 x Series 5000 cardModules (any mixture) ***
Controller	Integrated LAN controller. Manual IP setting or DHCP
Power Supplies	1 x Primary (removable)
Connections (termination panel)	
LAN connection	RJ 45 (10/100 Base T) **
Alarms	GPO outputs / GPI input on terminal strip <b>Alarm Major + Alarm Minor</b> - Relay contact closures (max 220VDC/250VA 2A)
	<b>GPO outputs</b> - Opto coupled outputs (max 60VDC/0.6A)
	<b>GPI Input</b> - Opto coupled input (max 60VDC/0.6A)
Reference Input	BNC analog sync reference input. Bi-level or Tri-level
Primary AC input*	Standard IEC 60320 C13 AC power connector, double pole fused (2A)
Redundant DC input	Molex Minifit 4 pin power connector, 12VDC input (External Brick power supply option: RPS 5000)
Connections (modules)	
Connection type	Connections are provided on the individual modules associated rear connection panel.
Electrical Specifications	
Power Input	90-250VAC 47-63Hz
No of AC inputs	1
AC connector	IEC 60320 C13 (10/15A)
Protection	AC input double pole fused (2.0A max)
Power Consumption	80W max.
Safety	IEC 60950/ EN 60950/VDE0805
Ambient	
Temperature	5°C to 40°C Maintaining specifications
Humidity	90% Max non condensing

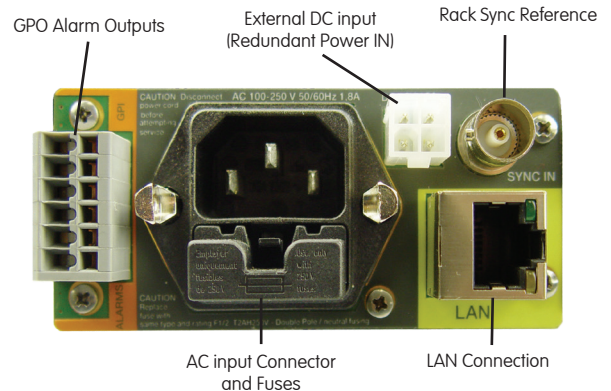
Specifications subject to change

#### Notes

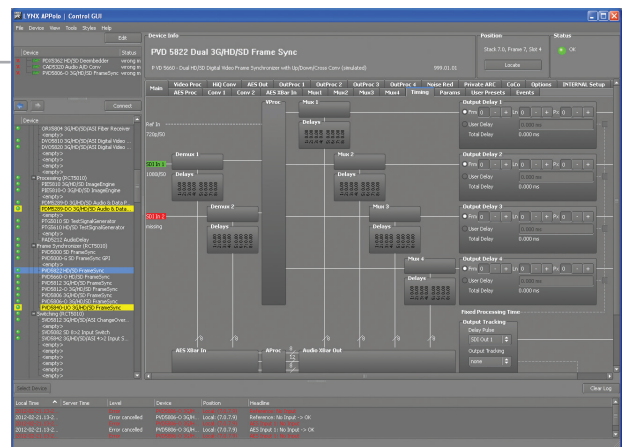
- \*\* LYNX APPolo Control Software included for remote operation
- \*\*\* Some of the Standard Series 5000 CardModules have "double width" backplanes when used in the standard 2RU rack frame (for I/O reasons).

A special "double height" backplane will be required to use these modules in the 1RU Chassis, and will occupy two of the four available slots.

Please check with your sales representative before ordering a Series 5000 Module which currently uses a double width backplane in the 2RU chassis to see if it currently compatible with the 1RU chassis.



Rack Termination Panel and Connections



The RFR 5041 is supplied with the **LYNX APPolo Control** software application which connects to the rack frame over a standard LAN connection. This can be used to preconfigure and store settings into any installed modules or left permanently connected for real time control, monitoring and error reporting. The user interface features an intuitive graphical layout with on screen controls and will autodetect any installed modules.

This requires a standard PC and supports Windows 2000, XP, Vista or Windows 7 operating systems.

### Ordering Information

Model #	Description	Includes
R FR 5041 -EU	1RU Rack Frame with Primary Power Supply (EU Plug AC Cord)	Rack frame, primary power supply, EU power cord, APPolo Control SW and reference manual (on CD)
R FR 5041 -UK	1RU Rack Frame with Primary Power Supply (UK Plug AC Cord)	Rack frame, primary power supply, US power cord, APPolo Control SW and reference manual (on CD)
R FR 5041 -US	1RU Rack Frame with Primary Power Supply (US Plug AC Cord)	Rack frame, primary power supply, US power cord, APPolo Control SW and reference manual (on CD)
R PS 5000	<b>Option:</b> External "Brick" Redundant power supply	External Brick 12VDC power supply (IEC power cord not supplied)